


Technical Information.

Below you can find detailed technical information on the FlexoClose closing system from HUBER Packaging Group GmbH. This information is intended exclusively for customers of HUBER Packaging Group GmbH and anyone interested in the company's products. Please remember that written permission is required from HUBER Packaging Group GmbH, Öhringen/Germany, if you want to pass this information on to a third party.

Dimensions / Space Requirements / Weight (also see sketch on the rear):

- Length of basic unit: at least 3,075 mm / 4,700 mm, incl. optional / adaptable inlet and outlet tunnel
- Width: 1,300 mm / Height: 2,290 mm
- Connecting dimension between transport systems: 3,075 mm
- Connecting height of transport systems (transport height): min. 480 mm
- Weight of one system: approx. 1,275 kg
- Direction of operation (left to right / right to left) can be chosen prior to machine construction

Connections / Energy demand / Protected area:

- Fully pneumatic operation (min. air pressure of 5 bar required)
- Compressed air purity requirements not specified
- Air consumption approx. 50 liters per pail / approx. 18 m³/h for 6 pails/min
- CE Declaration of Conformity (CE marking)
- ATEX Declaration of Conformity for ATEX zone 1:  II 2 G Ex c IIB T4
- Electric inputs/outputs not possible

Capacity / Output:

- Closing capacity of max. 7 pails/min

Processing / Changeover:

- Only heavy clamping rings can be processed (see hazardous goods pails)
- Capacity of the cotter pin drum: 300 special cotter pins on strips, one cotter pin size for all clamping rings
- Cotter pins can be reloaded during operation
- Standard height lid magazine designed for approx. 50 lids, incl. clamping ring / customizable
- Lids with inserted plastic closures with spout can also be used
- Changeover to other pail diameters and heights takes roughly 10 minutes

Pail sizes:

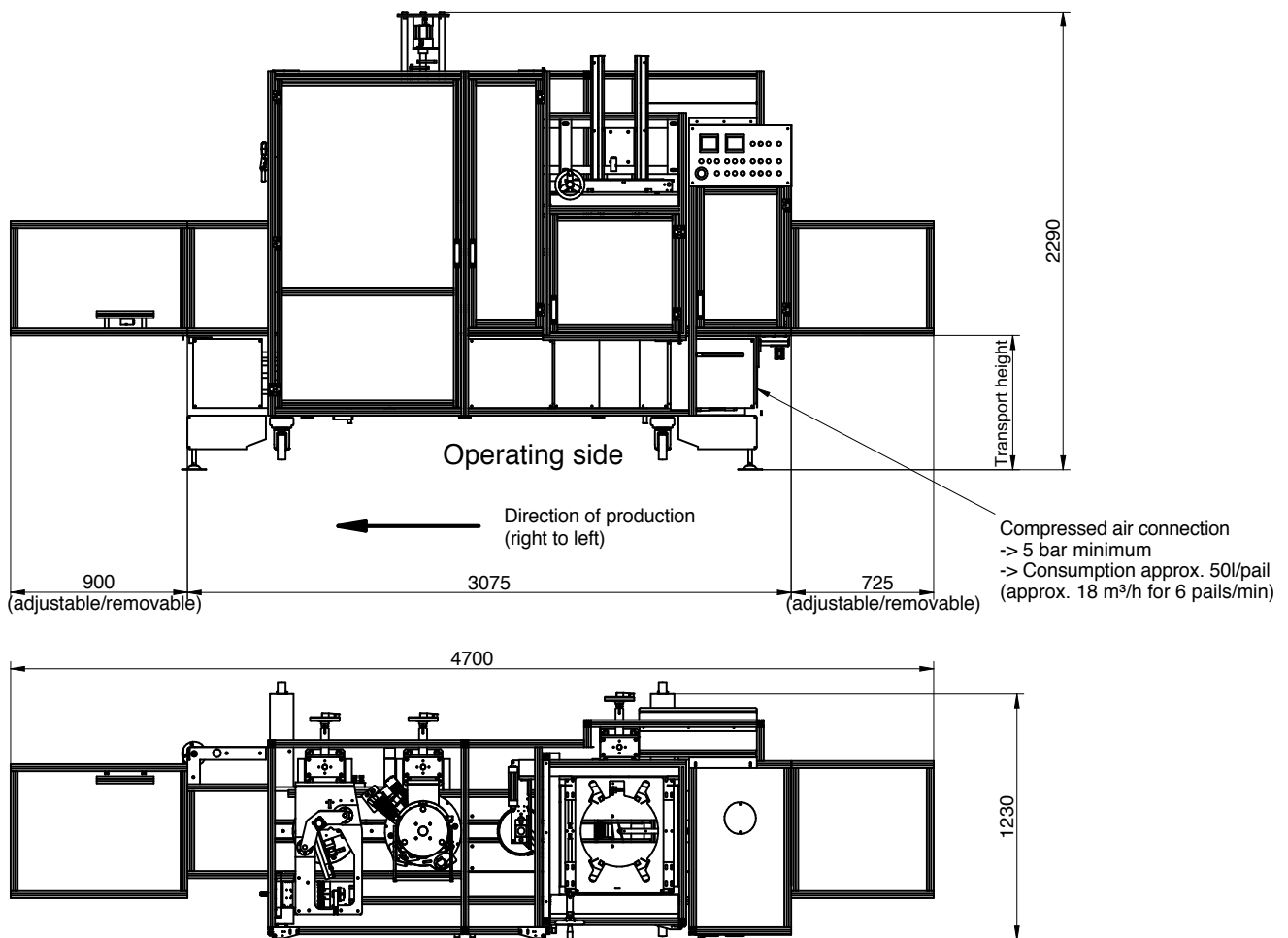
- Pails with heavy clamping rings from 2.5 to 30 liters (Ø163 to Ø328 mm)
- Pail heights of between 70 and 500 mm can be processed
- For more details, please refer to the brochure

VIDEO

www.youtube.com/user/HuberPackagingGroup



Sketch with dimensions of a FlexoClose closing machine,
front view operator side and top view:



VIDEO

www.youtube.com/user/HuberPackagingGroup

